

# Exploring Bentley STAAD.Pro

(CONNECT Edition, V22)

(4<sup>th</sup> Edition)

**CADCIM Technologies**

*525 St. Andrews Drive*

*Schererville, IN 46375, USA*

*([www.cadcim.com](http://www.cadcim.com))*

*Contributing Author*

**Sham Tickoo**

*Professor*

*Purdue University Northwest*

*Department of Mechanical Engineering Technology*

*Hammond, Indiana, USA*





# **CADCIM Technologies**

## **Exploring Bentley STAAD.Pro CONNECT Edition, V22 (4<sup>th</sup> Edition) Sham Tickoo**

CADCIM Technologies  
525 St Andrews Drive  
Schererville, Indiana 46375, USA  
[www.cadcim.com](http://www.cadcim.com)

Copyright ©2021 by CADCIM Technologies, USA. All rights reserved. Printed in the United States of America except as permitted under the United States Copyright Act of 1976.

No part of this publication may be reproduced or distributed in any form or by any means, or stored in the database or retrieval system without the prior permission of CADCIM Technologies.

ISBN 978-1-64057-107-5

### **NOTICE TO THE READER**

Publisher does not warrant or guarantee any of the products described in the text or perform any independent analysis in connection with any of the product information contained in the text. Publisher does not assume, and expressly disclaims, any obligation to obtain and include information other than that provided to it by the manufacturer.

The reader is expressly warned to consider and adopt all safety precautions that might be indicated by the activities herein and to avoid all potential hazards. By following the instructions contained herein, the reader willingly assumes all risks in connection with such instructions.

The publisher makes no representation or warranties of any kind, including but not limited to, the warranties of fitness for particular purpose or merchantability, nor are any such representations implied with respect to the material set forth herein, and the publisher takes no responsibility with respect to such material. The publisher shall not be liable for any special, consequential, or exemplary damages resulting, in whole or part, from the reader's use of, or reliance upon this material.

[www.cadcim.com](http://www.cadcim.com)

## **DEDICATION**

*To teachers, who make it possible to disseminate knowledge  
to enlighten the young and curious minds  
of our future generations*

*To students, who are dedicated to learning new technologies  
and making the world a better place to live in*

## **THANKS**

*To employees of CADCIM Technologies and  
Tickoo Institute of Emerging Technologies (TIET)  
for their valuable help*

## Online Training Program Offered by CADCIM Technologies

---

*CADCIM Technologies provides effective and affordable virtual online training on various software packages including Computer Aided Design, Manufacturing and Engineering (CAD/CAM/CAE), computer programming languages, animation, architecture, and GIS. The training is delivered 'live' via Internet at any time, any place, and at any pace to individuals as well as the students of colleges, universities, and CAD/CAM/CAE training centers. The main features of this program are:*

### Training for Students and Companies in a Classroom Setting

*Highly experienced instructors and qualified Engineers at CADCIM Technologies conduct the classes under the guidance of Prof. Sham Tickoo of Purdue University Northwest, USA. This team has authored several textbooks that are rated "one of the best" in their categories and are used in various colleges, universities, and training centers in North America, Europe, and in other parts of the world.*

### Training for Individuals

*CADCIM Technologies with its cost effective and time saving initiative strives to deliver the training in the comfort of your home or work place, thereby relieving you from the hassles of traveling to training centers.*

### Training Offered on Software Packages

*CADCIM Technologies provide basic and advanced training on the following software packages:*

**CAD/CAM/CAE:** CATIA, Pro/ENGINEER Wildfire, SOLIDWORKS, Autodesk Inventor, Solid Edge, NX, AutoCAD, AutoCAD LT, Customizing AutoCAD, AutoCAD Electrical, EdgeCAM, and ANSYS

**Architecture and GIS:** Autodesk Revit (Architecture/Structure/MEP), Autodesk Navisworks, ETABS, Bentley STAAD.Pro, AutoCAD Raster Design, ArcGIS, AutoCAD Civil 3D, AutoCAD Map 3D, Oracle Primavera P6, MS Project

**Animation and Styling:** Autodesk 3ds Max, Autodesk Maya, Autodesk Alias, Pixologic ZBrush, and CINEMA 4D

**Computer Programming:** C++, VB.NET, Oracle, AJAX, and Java

*For more information, please visit the following link:*

***<https://www.cadcim.com>***

#### **Note**

If you are a faculty member, you can register by clicking on the following link: **<https://www.cadcim.com/Registration.aspx>**. The student resources are available at **<https://www.cadcim.com>**. We also provide **Live Virtual Online Training** on various software packages. For more information, write us at **[sales@cadcim.com](mailto:sales@cadcim.com)**.

# Table of Contents

<b>Dedication</b>	iii
<b>Preface</b>	xi

## Chapter 1: Introduction to STAAD.Pro CONNECT Edition

Introduction to STAAD.Pro CONNECT Edition	1-2
Basic Features of STAAD.Pro CONNECT Edition	1-2
Starting Bentley STAAD.Pro CONNECT Edition	Enhanced 1-2
The Open Tab	Enhanced 1-3
The Archive Tab	1-3
The Share Tab	Enhanced 1-4
The Help Tab	1-5
The License Tab	1-6
The Configure Tab	1-6
Starting a New Project	Enhanced 1-7
Working in User Interface	1-9
Ribbon Tab	Enhanced 1-9
Tool Search	1-13
Quick Access Toolbar	1-13
Workflows	Enhanced 1-14
Data Area	1-16
Status Bar	1-17
View Window	1-17
Keyboard Shortcuts	1-17
Importing and Exporting a Model in STAAD.Pro	1-18
Self-Evaluation Test	1-20
Review Questions	1-21

## Chapter 2: Structural Modeling in STAAD.Pro

Introduction	2-2
Structural Modeling Using Editor	2-3
Creating Nodes	2-3
Creating Members	2-7
Creating Plate Elements	2-14
Creating Solid Elements	2-16
Structural Modeling Using STAAD GUI	2-18
Creating Nodes and Members Using Snap Node/Beam Method	2-18
Creating Plate Elements Using the Snap Node/Plate Method	2-24
Creating Solid Elements Using the Snap Node/Solid Method	2-25
Structural Modeling Using the Structure Wizard	2-28

Truss Models	2-29
Frame Models	2-31
Surface/Plate Models	2-32
Solid Models	2-33
Composite Models	2-34
Import CAD Models	2-35
VBA Macro Models	2-35
Self-Evaluation Test	2-39
Review Questions	2-39

### Chapter 3: Structural Modeling Using Tools

Introduction	3-2
Essential tools for Structural Modeling	3-2
Adding Beams Using Tools	3-2
Creating Colinear Beams	3-8
Creating Beams Along Axes	3-8
Creating Plates Using Tools	3-10
Creating Plates Using Meshing	3-10
Creating Infill Plates	3-13
Creating Solid Elements Using the Add Solid Tool	3-14
Creating a Structure Using the Translational Repeat Tool	3-15
Creating a Structure Using the Circular Repeat Tool	3-15
Shifting Structure Using the Move Node Tool	3-19
Shifting Structure Using the Move Origin Tool	3-19
Rotating Structure Using the Generate Rotate Tool	3-19
Mirroring a Structure	3-22
Other Miscellaneous Tools	3-24
Stretching Members Using the Stretch Tool	3-24
Intersecting Members Using the Intersect Tool	3-25
Merging Members and Nodes	3-26
Renumbering Nodes, Members, and Elements	3-26
Breaking Beams at Selected Nodes	3-27
Cutting Sections	3-27
Self-Evaluation Test	3-31
Review Questions	3-32

### Chapter 4: Defining Material Constants and Section Properties

Introduction	4-2
Material Constants	4-2
Creating New Materials	4-3
Editing Material Properties	4-4
Assigning Materials to the Structure	4-4
Defining Orthotropic Material	4-5
Section Properties	4-9
Prismatic Section	4-9

Tapered Sections	4-13
Steel Sections	4-14
Steel Joist and Joist Girders	4-17
Plate Thickness	4-17
Self-Evaluation Test	4-20
Review Questions	4-21

## Chapter 5: Specifications and Supports

Introduction	5-2
Node Specification	5-2
Member Specification	5-8
Release	5-8
Offset	5-9
Property Reduction Factors	5-12
Cable	5-12
Truss	5-12
Compression	5-12
Tension	5-13
Inactive	5-13
Fire Proofing	5-13
Imperfection	5-14
Plate Specification	5-14
Release	5-14
Ignore Inplane Rotation	5-15
Rigid Inplane Rotation	5-15
Plane Stress	5-15
Ignore Stiffness	5-15
Supports	5-16
Fixed	5-16
Pinned	5-17
Fixed But	5-17
Enforced	5-18
Enforced But	5-18
Multilinear Spring	5-18
Foundation	5-18
Inclined	5-19
Tension/Compression Only Springs	5-20
Self-Evaluation Test	5-23
Review Questions	5-23

## Chapter 6: Loads

Introduction	6-2
Primary Loads	6-2
Selfweight	6-3
Nodal Load	6-4
Member Load	6-5

Area Load	6-10
Floor Load	6-11
Plate Loads	6-13
Solid Loads	6-18
Temperature Loads	6-19
Seismic Loads	6-19
Time History	6-27
Wind Load	6-32
Snow Load	6-40
Response Spectra	6-43
Repeat Load	6-49
Frequency	6-50
Load generation	6-50
Defining Vehicle Loading	6-51
Defining Load Combinations	6-58
Defining Load Combinations Automatically	6-59
Self-Evaluation Test	6-61
Review Questions	6-62

## **Chapter 7: Performing Analysis, Viewing Results, and Preparing Report**

Introduction	7-2
Pre Analysis Print	7-2
Problem Statistics	7-2
Joint Coordinates	7-3
Member Information	7-3
Material Properties	7-3
Support Information	7-3
Member Properties	7-3
Element Information	7-3
Solid Information	7-3
All	7-4
Cg	7-4
Performing Analysis	7-4
Perform Analysis	7-5
PDelta Analysis	7-5
Perform Cable Analysis	7-5
Perform Direct Analysis	7-7
Perform Imperfection Analysis	7-8
Perform Buckling Analysis	7-8
Perform Pushover Analysis	7-8
Post Analysis Print	7-8
Load List	7-9
Joint Displacement	7-9
Member Forces	7-9
Support Reactions	7-9
Story Drift	7-10



Cg	7-10
Mode Shapes	7-10
Section Displacement	7-10
Force	7-10
Analysis Results	7-10
Member Stresses	7-11
Element Forces/Stresses	7-11
Viewing Results	7-11
View Output File	7-12
Go to Post Processing Mode	7-12
Preparing Reports	7-19
Self-Evaluation Test	7-29
Review Questions	7-29

## **Chapter 8: Physical Modeling**

Introduction	8-2
Starting a New Project In Physical Modeling	8-2
Modeling	8-3
Using Construction Aids	8-3
Drawing the Structure	8-5
Assigning Model Properties	8-12
Defining Boundary Conditions	8-17
Applying Loads	8-19
STAAD.Pro Model Data	8-27
Transferring Physical Model to Analytical Model in STAAD.Pro	8-27
Self-Evaluation Test	8-28
Review Questions	8-28

<b>Index</b>	<b>I-1</b>
--------------	------------

## Conversion Table

Conversion Table-Metric/Imperial			
	Unit	Multiply By (Factor)	To Obtain
Length	Inch	2.54	Centimeter
	Centimeter	0.393	Inch
	Feet	0.301	Meter
	Meter	3.281	Feet
	Kilometer	0.54	Nautical Mile
	Nautical Mile	1.852	Kilometer
	Feet	0.000304	Kilometer
Weight and Mass	Ounce	28.35	Gram
	Gram	0.0353	Ounce
	Pound	0.453	Kilogram
	Kilogram	2.205	Pounds
	Metric Ton	1.102	Ton
Liquid Measures	Fluid Ounce	0.0296	Liter
	Gallon	3.785	Liter
	Liter	0.264	Gallon
Thrust / Pressure	Pounds Force	4.448	Newton
	Newton	0.225	Pound
	Pound per square inch (psi)	6.895	KiloPascal
Temperature	Kelvin	1	Degree Celsius-273.15
	Degree Celsius	1.8	Degree Fahrenheit +32

# Preface

---

## **STAAD.Pro CONNECT Edition**

STAAD.Pro CONNECT Edition, developed by Bentley Systems, is a powerful software used for structural analysis and design. It has various tools that help in modeling 2D and 3D models. These tools analyze and virtually design any type of structure. This enables the users to automate their tasks, and remove the tedious long procedures involved in the manual methods. STAAD.Pro is an effective tool for structural engineers and construction professionals.

STAAD.Pro has an extremely flexible modeling environment that helps in creating accurate models quickly and accurately. It supports broad ranges of Steel, Concrete, Aluminium, and Timber design codes. It is capable of analyzing any structure for static loads, dynamic response, soil-structure interaction, wind, earthquake, and moving loads. STAAD.Pro supports Bentley Rebar, AutoPipe, RAM Connection, STAAD.Foundation, and other software.

**Exploring Bentley STAAD.Pro CONNECT Edition, V22** is a comprehensive textbook that has been written to cater to the needs of the students and professionals. The chapters in this textbook are structured in a pedagogical sequence, which makes the learning process very simple and effective for both the novice as well as the advanced users of STAAD.Pro. In this textbook, the author explains in detail the procedure of creating 2D and 3D models, assigning material constants, assigning cross-section properties, assigning supports, defining different loads, performing analysis, viewing results, and preparing report. The chapters in the book are punctuated with tips and notes, wherever necessary, to make the concepts clear, thereby enabling the user to create his own innovative projects.

The highlight of this textbook is that each concept introduced in it is explained with the help of suitable examples to facilitate better understanding. The simple and lucid language used in this textbook makes it a ready reference for both the beginners and the intermediate users.

- **Concepts Explained with Examples**

The author has explained the concepts in detail with examples for better comprehension of the processes involved.

- **Tips and Notes**

The additional information related to topics is provided to the users in the form of tips and notes.

- **Learning Objectives**

The first page of every chapter summarizes the topics that are covered in that chapter.

- **Self-Evaluation Test and Review Questions**

Every chapter ends with Self-Evaluation Test so that the users can assess their knowledge of the chapter. The answers to Self-Evaluation Test are given at the end of the chapter. Also, Review Questions are given at the end of chapters and they can be used by instructors as test questions.

- **Heavily Illustrated Text**

The text in this book is heavily illustrated with screen capture images.

## **Symbols Used in the Textbook**



### **Note**

The author has provided additional information related to various topics in the form of notes.



### **Tip**

The author has provided a lot of information to the users about the topic being discussed in the form of tips.



### **New**

This symbol indicates that the command or tool being discussed is new in this release.



### **Enhanced**

This symbol indicates that the command or tool being discussed has been enhanced in this release.

## **Unit System Followed in the Textbook**

In this book, the Metric system has been used as the default unit system.

## **Formatting Conventions Used in the Textbook**

Please refer to the following list for the formatting conventions used in this textbook.

- Names of tools, buttons, options, menu, command, pages, and tabs are written in boldface. Example: The **Add Beams** tool, the **OK** button, the **File** menu, the **Modeling** tab, the **General** page, and so on.
- Names of dialog boxes, menus, windows, edit boxes, check boxes, and radio buttons are written in boldface. Example: The **Property** dialog box, the **Density** edit box of the **Property** dialog box, and so on.
- Values entered in edit boxes are written in boldface. Example: Enter **Buildings** in the **Name** edit box.
- Names of the files are italicized. Example: *c03\_staad\_connect\_ex1*

## Naming Conventions Used in the Textbook

### Tool

If you click on an item in a toolbar and a command is invoked to create/edit an object or perform some action, then that item is termed as tool. For example: **Insert Node** tool and **Translational Repeat** tool, refer to Figure 1.

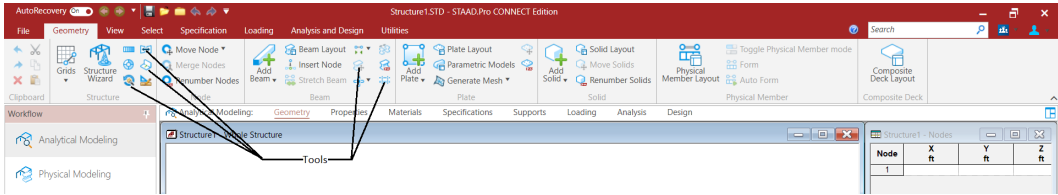


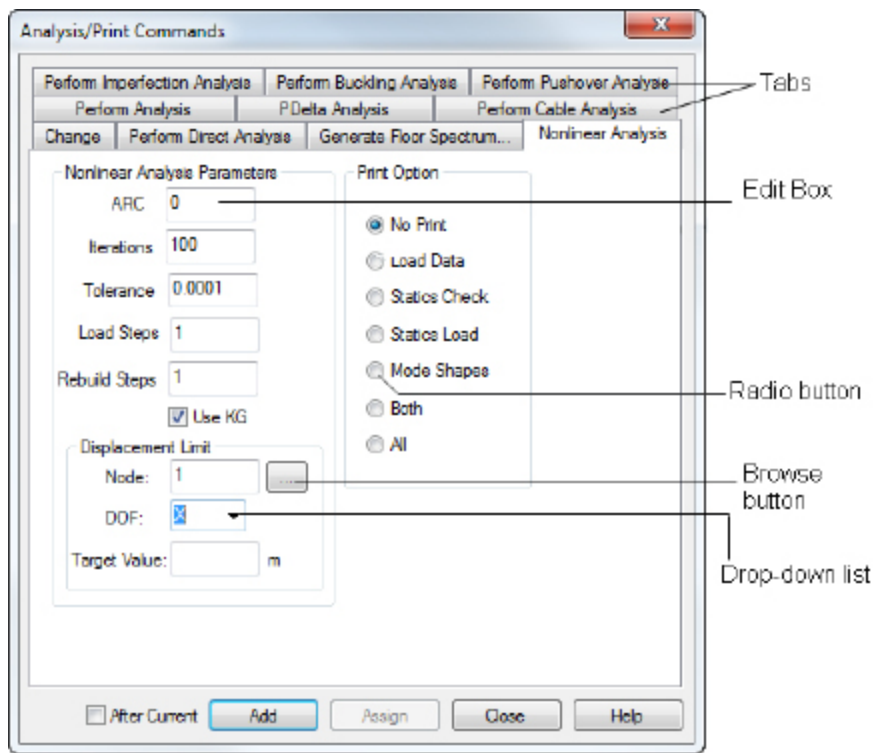
Figure 1 Different tools in the start screen of STAAD.Pro CONNECT Edition

### Button

The item in a dialog box that has a 3d shape is termed as Button. For example, **OK** button, **Cancel** button, **Apply** button, and so on.

### Dialog Box

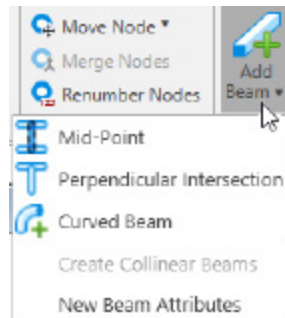
In this textbook, different terms are used to indicate various components of a dialog box, refer to Figure 2.



*Figure 2 Different components of a dialog box*

## Drop-Down

A drop-down is the one in which a set of common tools are grouped together. You can identify a drop-down with a down arrow on it. These drop-downs are given a name based on the tools grouped in them. For example, **Add Beam** drop-down, **Add Plate** drop-down, and so on; refer to Figure 3.



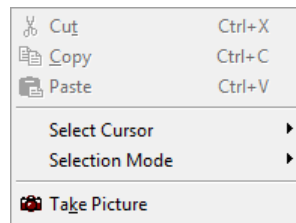
*Figure 3 The Add Beam drop-down*

## Drop-Down List

A drop-down list is the one in which a set of options are grouped together. You can set various parameters using these options. You can identify a drop-down list with a down arrow on it. To know the name of a drop-down list, move the cursor over it; its name will be displayed as a tool tip. For example, Loading type drop-down list, DDF drop-down list, and so on.

## Options

Options are the items that are available in shortcut menus, dialog boxes, drop-down lists, and so on. For example, choose the **Orientation** option from the shortcut menu displayed on right-clicking in the Main Window, refer to Figure 4.



*Figure 4 The shortcut menu displayed in the main window*

## Free Companion Website

It has been our constant endeavor to provide you the best textbooks and services at affordable price. In this endeavor, we have come out with a Free Companion website that will facilitate the process of teaching and learning of STAAD.Pro CONNECT Edition. If you purchase this textbook, you will get access to the files on the Companion website.

The resources available for the faculty and students in this website are as follows:

### Faculty Resources

- **Technical Support**

You can get online technical support by contacting [techsupport@cadcim.com](mailto:techsupport@cadcim.com).

- **Instructor Guide**

Solutions to all review questions and exercises in the textbook are provided in the instructor guide to help the faculty members test the skills of the students.

- **Example Files**

The example files used are available for free download.

**Student Resources****• Technical Support**

You can get online technical support by contacting *techsupport@cadcim.com*.

**• Example Files**

The example files used are available for free download.

If you face any problem in accessing these files, please contact the publisher at *sales@cadcim.com* or the author at *stickoo@pnw.edu* or *tickoo525@gmail.com*.

**Video Courses**

CADCIM offers video courses in CAD, CAE Simulation, BIM, Civil/GIS, and Animation domains on various e-Learning/Video platforms. To enroll for the video courses, please visit the CADCIM website using the following link: *<https://www.cadcim.com/video-courses>*.

**Stay Connected**

You can now stay connected with us through Facebook and Twitter to get the latest information about our textbooks, videos, and teaching/learning resources. To stay informed of such updates, follow us on Facebook (*[www.facebook.com/cadcim](http://www.facebook.com/cadcim)*) and Twitter (*@cadcimtech*). You can also subscribe to our YouTube channel (*[www.youtube.com/cadcimtech](http://www.youtube.com/cadcimtech)*) to get the information about our latest video tutorials.