

# Table of Contents

<b>Dedication</b>	iii
<b>Preface</b>	xvii

## **Chapter 1: Introduction to Creo Parametric 7.0**

Introduction to Creo Parametric 7.0	1-2
Features of Creo Parametric	1-2
Feature-Based Nature	1-2
Bidirectional Associative Property	1-3
Parametric Nature	1-6
System Requirements	1-6
Getting Started with Creo Parametric	1-6
Important Terms and Definitions	1-7
File Menu Options	1-8
Managing Files	1-20
Menu Manager	1-20
Model Tree	1-20
Understanding the Functions of the Mouse Buttons	1-21
Ribbon	1-23
Toolbars	1-23
Navigator	1-27
Creo Parametric Browser	1-27
Appearance Gallery	1-28
Rendering in Creo Parametric	1-31
Color Scheme Used in this Book	1-32
Self-Evaluation Test	1-33

## **Chapter 2: Creating Sketches in the Sketch Mode-I**

The Sketch Mode	2-2
Working with the Sketch Mode	2-2
Invoking the Sketch Mode	2-2
The Sketcher Environment	2-3
Working with a Sketch in the Sketch Mode	2-4
Drawing a Sketch Using the tools available in the Sketch Tab	2-4
Creating a Point	2-4
Drawing Lines	2-5
Drawing a Centerline	2-6
Drawing a Geometry Centerline	2-7
Drawing a Rectangle	2-7
Drawing a Circle	2-9
Drawing an Ellipse	2-10
Drawing an Arc	2-11
Drawing Construction Geometries	2-14

Dimensioning the Sketch	2-14
Converting a Weak Dimension into a Strong Dimension	2-15
Dimensioning a Sketch Using the Dimension Tool	2-15
Dimensioning the Sketched Entities	2-15
Working With Constraints	2-19
Types of Constraints	2-19
Disabling the Constraints	2-20
Modifying the Dimensions of a Sketch	2-21
Using the Modify Tool	2-21
Modifying a Dimension by Double-Clicking	2-22
Modifying Dimensions Dynamically	2-22
Locking Dimensions and Entities	2-22
Resolve Sketch Dialog Box	2-22
Deleting the Sketched Entities	2-23
Trimming the Sketched Entities	2-24
Mirroring the Sketched Entities	2-25
Inserting Standard/User-Defined Sketches	2-26
Drawing Display Options	2-27
Tutorial 1	2-29
Tutorial 2	2-35
Tutorial 3	2-40
Self-Evaluation Test	2-45
Review Questions	2-45
Exercise 1	2-46
Exercise 2	2-46
Exercise 3	2-47
Exercise 4	2-47
Exercise 5	2-48
Exercise 6	2-48

### Chapter 3: Creating Sketches in the Sketch Mode-II

Dimensioning the Sketch	3-2
Dimensioning a Sketch Using the Baseline Tool	3-2
Replacing the Dimensions of a Sketch Using the Replace Tool	3-3
Creating Fillets	3-3
Creating Circular Fillets	3-3
Creating Elliptical Fillets	3-5
Creating a Reference Coordinate System	3-6
Working with Splines	3-6
Creating a Spline	3-7
Dimensioning of Splines	3-7
Modifying a Spline	3-9
Writing Text in the Sketcher Environment	3-10
Offsetting Sketched Entities	3-11
Thickening Sketched Entities	3-13
Rotating and Resizing Entities	3-15
Sketch Diagnostic Tools	3-16

Feature Requirements	3-16
Overlapping Geometry	3-16
Highlight Open Ends	3-17
Shade Closed Loops	3-17
Importing 2D Drawings in the Sketch Mode	3-17
Tutorial 1	3-18
Tutorial 2	3-23
Tutorial 3	3-27
Self-Evaluation Test	3-31
Review Questions	3-32
Exercise 1	3-33
Exercise 2	3-33
Exercise 3	3-34

## Chapter 4: Creating Base Features

Concept of Sketch Based Features	4-2
Creating Base Features	4-2
Invoking the Part Mode	4-2
Changing the Units of the Part Mode	4-4
Creating a Custom System of Units	4-5
The Default Datum Planes	4-6
Creating a Protrusion	4-6
Extruding a Sketch	Enhanced 4-7
Revolving a Sketch	Enhanced 4-19
Understanding the Orientation of Datum Planes	4-21
Changing the Orientation of the Model	4-26
Parent-Child Relationship	4-28
Implicit Relationship	4-28
Explicit Relationship	4-28
Sketch Region	4-28
Nesting of Sketches	4-29
Creating Cuts	4-30
Removing Material by Using the Extrude Tool	4-30
Removing Material by Using the Revolve Tool	4-31
Tutorial 1	4-32
Tutorial 2	4-39
Tutorial 3	4-45
Tutorial 4	4-49
Tutorial 5	4-55
Self-Evaluation Test	4-62
Review Questions	4-63
Exercise 1	4-64
Exercise 2	4-65
Exercise 3	4-65
Exercise 4	4-66
Exercise 5	4-66

## Chapter 5: Datums

Datums	5-2
Need for Datums in Modeling	5-2
Selection Method in Creo Parametric	5-3
Default Datum Planes	5-5
Datum Options	5-6
Datum Planes	5-7
Creating Datum Planes	5-9
Offset Planes	5-15
Datum Axes	5-16
Datum Points	5-21
Datum Coordinate System	5-30
Datum Curves	5-35
Curve from Cross Section	5-42
Asynchronous Datum features	5-42
Tutorial 1	5-43
Tutorial 2	5-54
Tutorial 3	5-63
Self-Evaluation Test	5-70
Review Questions	5-71
Exercise 1	5-72
Exercise 2	5-72
Exercise 3	5-74
Exercise 4	5-75

## Chapter 6: Options Aiding Construction of Parts-I

Options Aiding Construction of Parts	6-2
Creating Holes	6-2
The Hole Dashboard <i>Enhanced</i>	6-2
Important Points to Remember While Creating a Hole	6-16
Creating Rounds	6-17
Creating Basic Rounds	6-18
Creating a Variable Radius Round	6-27
Points to Remember While Creating Rounds	6-35
Creating Auto Rounds <i>Enhanced</i>	6-35
Creating Rounds Using Intent Edges	6-37
Creating Chamfers	6-38
Corner Chamfer	6-39
Edge Chamfer	6-39
Understanding Ribs	6-43
Creating Trajectory Ribs	6-43
Creating Profile Ribs	6-45
Editing Features of a Model	6-47
Editing Definition or Redefining Features	6-47
Reordering Features	6-48
Rerouting Features	6-49

Suppressing Features	6-51
Deleting Features	6-52
Modifying Features	6-52
Tutorial 1	6-53
Tutorial 2	6-63
Tutorial 3	6-68
Tutorial 4	6-73
Self-Evaluation Test	6-81
Review Questions	6-82
Exercise 1	6-83
Exercise 2	6-83

## Chapter 7: Options Aiding Construction of Parts-II

Options Aiding Construction of Parts	7-2
Shell Feature	7-2
Creating Draft Features	7-5
Toroidal Bend	7-14
Spinal Bend	7-18
Cosmetic Sketch	7-21
Cosmetic Thread	7-22
Cosmetic Groove	7-23
Warp	7-24
Tutorial 1	7-39
Tutorial 2	7-42
Tutorial 3	7-45
Tutorial 4	7-49
Self-Evaluation Test	7-56
Review Questions	7-57
Exercise 1	7-57
Exercise 2	7-58

## Chapter 8: Options Aiding Construction of Parts-III

Introduction	8-2
Creating Feature Pattern	8-2
Uses of Pattern	8-2
Creating Pattern	8-2
Creating Geometry Pattern	8-18
Deleting a Pattern	8-20
Copying and Pasting Features	8-20
Mirroring a Geometry	8-24
User-Defined Features (UDF)	8-25
Subordinate UDFs	8-25
Standalone UDFs	8-26
Creating UDF	8-26
Placing UDF	8-28

Layers	8-30
Creating and Managing Layers	8-31
Creating Layer States	8-32
Tutorial 1	8-33
Tutorial 2	8-38
Tutorial 3	8-47
Tutorial 4	8-51
Tutorial 5	8-58
Self-Evaluation Test	8-71
Review Questions	8-71
Exercise 1	8-72
Exercise 2	8-73
Exercise 3	8-74
Exercise 4	8-75

## Chapter 9: Advanced Modeling Tools

Advanced Modeling Tools	9-2
Sweep Features	9-2
Sweep	9-2
Helical Sweep	9-19
Volume Helical Sweep	9-23
Blend Features	9-26
Blend	9-26
Swept Blend	9-31
Rotational Blend	9-35
Tutorial 1	9-36
Tutorial 2	9-42
Tutorial 3	9-47
Tutorial 4	9-49
Tutorial 5	9-59
Tutorial 6	9-64
Self-Evaluation Test	9-69
Review Questions	9-70
Exercise 1	9-71
Exercise 2	9-72
Exercise 3	9-74
Exercise 4	9-76

## Chapter 10: Assembly Modeling

Assembly Modeling	10-2
Important Terms Related to the Assembly Mode	10-2
Top-down Approach	10-2
Bottom-up Approach	10-3
Placement Constraints	10-3
Package	10-4

Enhanced

Creating Top-Down Assemblies	10-4
Creating Components in the Assembly Mode	10-4
Creating Bottom-up Assemblies	10-5
Inserting Components in an Assembly	10-5
Assembling Components	10-6
Displaying Components in a Separate Window	10-6
Displaying Components in the Same Window	10-7
3D Dragger	10-7
Applying Constraints	10-7
Status Area	10-11
Placement Tab	10-11
Move Tab	10-12
Options Tab	10-13
Flexibility Tab	10-13
Properties Tab	10-13
Packaging Components	10-14
Simplified Representations	10-15
Types of Simplified Representations	10-15
Creating Simplified Representations	10-17
Other Usages of the View Manager Dialog Box	10-20
Creating a Display Style	10-20
Setting the Orientation of an Assembly	10-21
Creating Sections of an Assembly	10-21
Redefining the Components of an Assembly	10-24
Reordering Components	10-25
Suppressing/Resuming Components	10-25
Replacing Components	10-25
Assembling Repeated Copies of a Component	10-26
Mirroring Components Inside an Assembly	10-28
Modifying the Components of an Assembly	10-29
Modifying Dimensions of a Feature of a Component	10-29
Redefining a Feature of a Component	10-29
Adding Flexibility to a Component	10-30
Creating the Exploded State	10-31
The Bill of Materials	10-35
Global Interference	10-36
Pairs Clearance	10-37
Shrinkwrap Features	10-37
Tutorial 1	10-40
Tutorial 2	10-54
Self-Evaluation Test	10-63
Review Questions	10-64
Exercise 1	10-65

## Chapter 11: Generating, Editing, and Modifying the Drawing Views

The Drawing Mode	11-2
Generating Drawing Views	11-5

Generating the General View	11-5
Generating the Projection View	11-7
Generating the Detailed View	11-7
Generating the Auxiliary View	11-8
Generating the Revolved Section View	11-9
Generating the Copy and Align View	11-19
Generating the 3D Cross-Section View	11-20
Editing the Drawing Views	11-23
Moving the Drawing View	11-23
Erasing the Drawing View	11-23
Deleting the Drawing View	11-23
Adding New Parts or Assemblies to the Current Drawing	11-24
Modifying the Drawing Views	11-24
Changing the View Type	11-24
Changing the View Scale	11-25
Reorienting the Views	11-25
Modifying the Cross-sections	11-25
Modifying Boundaries of Views	11-25
Adding or Removing the Cross-section Arrows	11-26
Modifying the Perspective Views	11-26
Modifying Other Parameters	11-26
Editing the Cross-section Hatching	11-26
Tutorial 1	11-27
Tutorial 2	11-36
Self-Evaluation Test	11-42
Review Questions	11-43
Exercise 1	11-44

## Chapter 12: Dimensioning the Drawing Views

Dimensioning the Drawing Views	12-2
Show Model Annotations Dialog Box	12-2
Dimension	12-4
Surface Finish	12-5
Reference Dimension	12-5
Jog	12-5
Mini Toolbar	12-5
Adding Notes to the Drawing	12-5
Adding Tolerances to the Drawing Views	12-6
Dimensional Tolerances	12-6
Geometric Tolerances	12-7
Editing the Geometric Tolerances	12-9
Adding Balloons to the Assembly Views	12-10
Adding Datum Features Symbols to the Drawing Views	12-10
Modifying and Editing Dimensions	12-12
Modifying the Dimensions Using the Dimension Dashboard	12-12
Cleaning Up the Dimensions	12-14
Tutorial 1	12-16



Tutorial 2	12-23
Self-Evaluation Test	12-27
Review Questions	12-28
Exercise 1	12-29

### Chapter 13: Other Drawing Options

Sketching in the Drawing Mode	13-2
Modifying the Sketched Entities	13-5
User-Defined Drawing Formats	13-10
Retrieving the User-Defined Formats in the Drawings	13-12
Adding and Removing Sheets in the Drawing	13-12
Creating Tables in the Drawing Mode	13-13
Generating the BOM and Balloons in Drawings	13-15
Tutorial 1	13-19
Tutorial 2	13-29
Self-Evaluation Test	13-39
Review Questions	13-40
Exercise 1	13-41

## CHAPTERS AVAILABLE FOR FREE DOWNLOAD

In this textbook, two chapters have been given for free download. You can download these chapters from our website [www.cadcam.com](http://www.cadcam.com). To download these chapters follow the given path: *Textbooks > CAD/CAM > PTC Creo Parametric > Creo Parametric 7.0 for Designers > Chapters for Free Download* and then select the chapter name from the **Chapters for Free Download** drop-down. Click the **Download** button to download the chapter in the PDF format.

### Chapter 14: Working with Sheetmetal Components

Introduction to Sheetmetal	14-2
Invoking the Sheetmetal Mode	14-2
Introduction to Sheetmetal Walls	14-3
Primary Walls	14-3
Secondary Walls	14-3
Creating the Planar Wall	14-3
Creating the Unattached Revolve Wall	14-4
Creating the Unattached Blend Wall	14-6
Creating the Unattached Rotational Blend Wall	14-8
Creating the Unattached Offset Wall	14-9
Creating a Flat Wall	Enhanced 14-10
Creating a Twist Wall	14-15
Creating an Extend Wall	14-16
Creating a Flange Wall	Enhanced 14-17
Creating the Bend Feature	14-21
Creating the Unbend Feature	14-27
Creating the Bend Back	14-29
Conversion to Sheetmetal Part	Enhanced 14-30

Creating Cuts in the Sheetmetal Components	Enhanced	14-32
Creating the Flat Pattern		14-33
Tutorial 1		14-34
Tutorial 2		14-41
Self-Evaluation Test		14-47
Review Questions		14-47
Exercise 1		14-48
Exercise 2		14-49

## Chapter 15: Surface Modeling

Surface Modeling	15-2
Creating Surfaces in Creo Parametric	15-2
Creating an Extruded Surface	15-2
Creating a Revolved Surface	15-3
Creating a Sweep Surface	15-3
Creating a Blend Surface	15-4
Creating a Rotational Blend Surface	15-4
Creating a Swept Blend Surface	15-5
Creating a Helical Sweep Surface	15-5
Creating a Surface by Blending Boundaries	15-6
Creating a Variable Section Sweep Surface by Using the Sweep Tool	15-8
Creating a Curve Using the Project Tool	15-9
Creating a Curve Using the Wrap Option	15-12
Creating Surfaces By Using the Style Environment of Creo Parametric	15-13
Style Dashboard	15-14
Mini Toolbar	15-21
Surface Editing Tools	15-22
Mirroring the Surfaces	15-22
Merging the Surfaces	15-23
Trimming the Surfaces	15-24
Creating the Fill Surfaces	15-25
Creating the Intersect Curves	15-26
Creating the Offset Surfaces	15-27
Adding Thickness to a Surface	15-30
Converting a Surface into a Solid	15-31
Creating a Round at the Vertex of a Surface	15-31
Freestyle Modeling Environment	15-31
Freestyle Dashboard	15-32
Tutorial 1	15-36
Tutorial 2	15-44
Tutorial 3	15-52
Self-Evaluation Test	15-56
Review Questions	15-57
Exercise 1	15-57
Exercise 2	15-58
Exercise 3	15-59

**Chapter 16: Introduction to Mold Design**

Introduction to Mold Design	16-2
Mold Assembly	16-2
Cavity	16-2
Core	16-2
Shrinkage Factor	16-2
Parting Line	16-2
Parting Surface	16-2
Draft Angle	16-3
Runner	16-3
Mold Designing Using Creo Parametric	16-3
Tutorial 1	16-4
Tutorial 2	16-16
Self-Evaluation Test	16-28
Review Questions	16-29
Exercise 1	16-29
Exercise 2	16-30

**Chapter 17: Concepts of Geometric Dimensioning and Tolerancing**

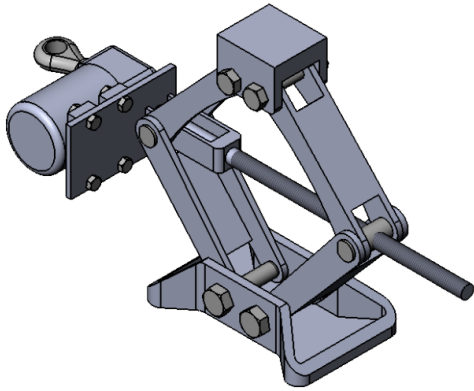
History of Tolerances and Allowances	17-2
Methods of Tolerancing	17-2
Limit Dimensioning	17-3
Plus and Minus Tolerancing	17-4
Geometric Tolerances	17-4
Form Tolerances	17-10
Profile Tolerances	17-19
Orientation Tolerances	17-22
Location Tolerances	17-25
Runout Tolerances	17-29
Fits	17-33
Hole Basis System	17-33
Shaft Basis System	17-34
Standard of Fits	17-39
Standard Inch Fits	17-39
Standard Metric Fits	17-42
Tutorial 1	17-46
Self-Evaluation Test	17-52
Review Questions	17-52
Exercise 1	17-53

## PROJECTS AVAILABLE FOR FREE DOWNLOAD

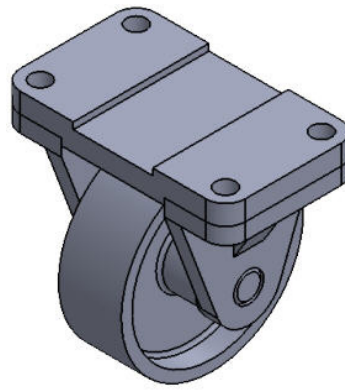
In this textbook, four projects are available for free download. You can download these projects from our website [www.cadcim.com](http://www.cadcim.com). To download these projects, follow the path: *Textbooks > CAD/CAM > PTC Creo Parametric > Creo Parametric 7.0 for Designers > Projects for Free Download* and then select the project name from the **Projects for Free Download** drop-down. Click the Download button to download the project in the PDF format.

### Note

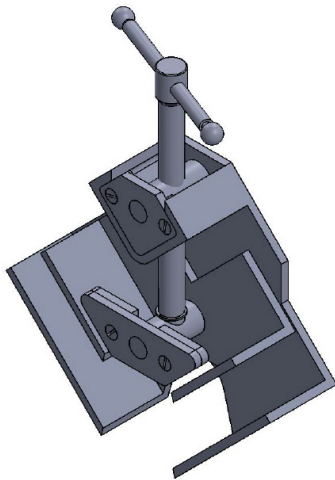
For additional projects, visit [www.cadcim.com](http://www.cadcim.com) and follow the path: *Textbooks > CAD/CAM > Parametric Solid Modeling > Parametric Solid Modeling Projects*



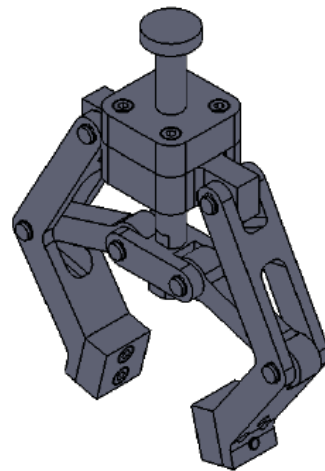
*Project 1: Car Jack Assembly*



*Project 2: Wheel Assembly*



*Project 3: Angle Clamp Assembly*



*Project 4: Pneumatic Gripper Assembly*